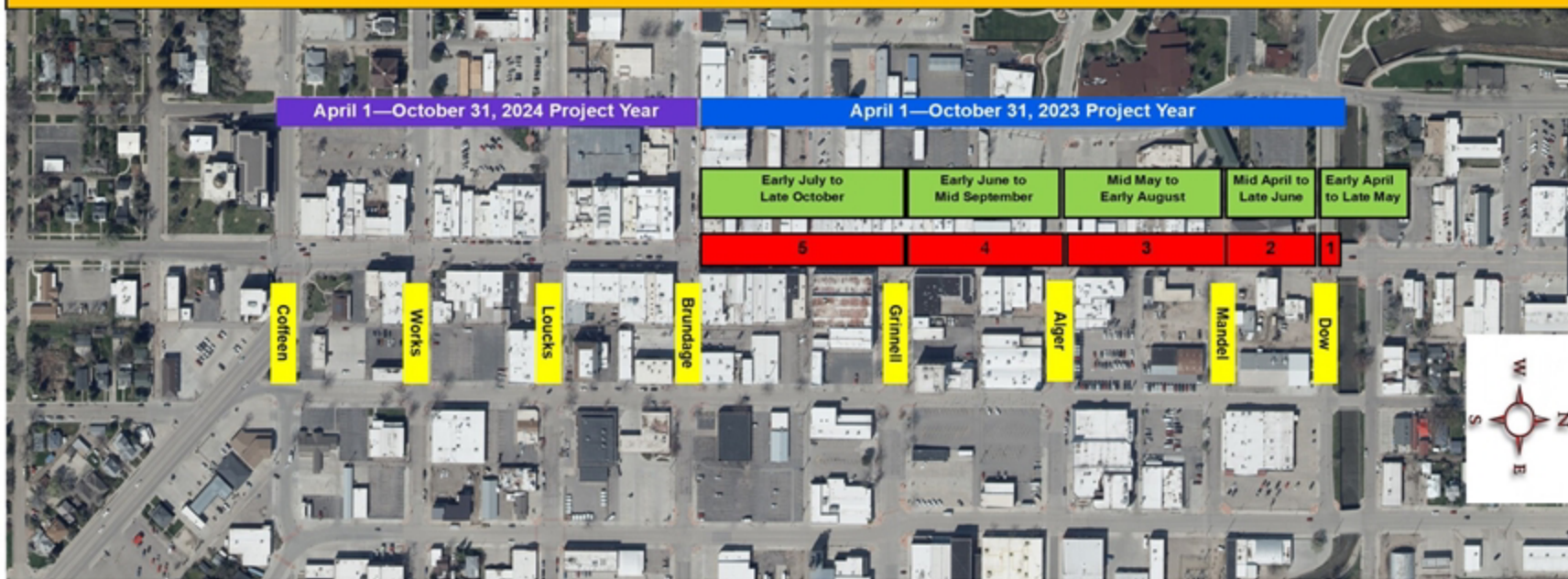


## 2023 Sheridan's Downtown Main Street Resurfacing and Utility Upgrade Project Closure Sequence



- Schedule is dependent on weather, materials and unforeseen circumstances—**Subject to Change.**
- Closed portions will open when pavement is sufficiently cured and pavement markings are in place.
- Brooks and Gould Streets will be utilized as primary North/South detour routes.
- East/West side streets will be utilized as detour routes based on location of closure.
- Way-finding signage will be put in place at both ends of the work zone for ALL businesses located within that closure area.
- An 8' construction fence with semi-opaque netting will be placed along the parameter of the work zone.
- All equipment and associated vehicles will be parked within the work zone or off site to allow for patron parking.
- **Sidewalks will remain open to pedestrian traffic at all times.**
- Hours of operation will be from 7 AM to 7 PM Monday through Saturday.

